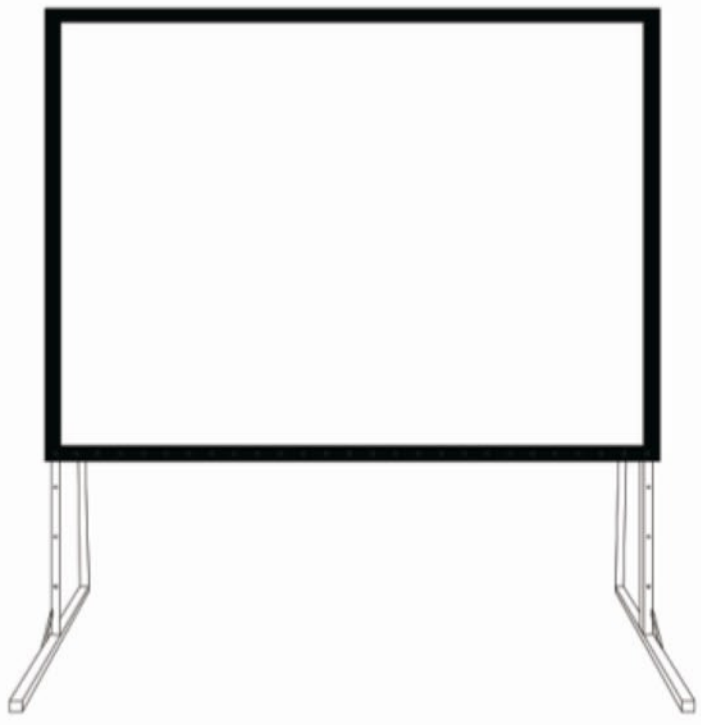


Easy Fold portable Screen User Manual

- Good clear picture quality
- Exquisite design
- Easy to use



Thank you for choosing our screen. Please read through the user manual before using the screen. Correct usage and maintenance could insure a longer life for the product.

User instructions

- When setting up the projection screen, care must be taken to distinguish between the front and the back of the screen fabric. Front or rear projection screen could be identified by the card which hangs on the corner of the fabric screen or in the screen fabric bag.
- Dust, dirt and scratches on the projection area will affect the picture quality. Take note of the points below to prevent this.
 1. Do not touch the projection area with hands.
 2. Do not write or draw on the projection area.
 3. Do not use fingers or sharp objects to point on the projection area, this will damage the screen fabric.
 4. Use a soft damp cloth or soft brush to clean the projection area.
 5. Do not use chemical cleaning agents or alcohol to clean the projection area. Use clean water only.
- After using the screen, disassemble and store it in the aluminum storage box provided.
- The screen should only be operated by adults to avoid accidental damage and injury.

Product Description

- **Design:**
The Aluminium frame is designed to be light weight and easily operated. This makes it easy to carry, assemble and disassemble.
- **Screen fabric:**
The screen fabric is attached to the rectangular frame and held in place by several snap buttons which ensure an evenly stretched and perfectly flat surface. Both types of fabric are durable and can be folded many times without any damage and the distortion rate of frame is less than 0.5%.
- **Assembly:**
The screen can be assembled in short period depends on the size and without the use of tools. The screen should be stored in an impact resistant Aluminium storage box when it is not in use.
- **Ideal for:**
Business meetings, churches, schools, Family centers and industrial training rooms. Correct use of the projection screen will ensure better results. For front projection assemble and view the screen as indicated in fig.1 For rear projection assemble and view the screen as indicated in fig.2



Assembly instructions

1. Take the folding frames and connecting poles out of the box and place it on a flat surface. (Fig.3)
2. Unfold the frame until the latch on the hinge "clicks" into place.(Fig.4)
3. Make sure the hinged support bar at 4 corners are straight and not bent. (Fig.5-6)
4. Attach the upper frame to the lower frame and fasten two frames with M8X16 screws. (Fig.7-8)

Assembly instructions

- (Fig.12)
- (Fig.13)
- (Fig.14)
7. Take the straight poles and the supporting legs (back and side) out of the box. Unfold it and make sure the hinges click into place. (Fig.15)

Assembly instructions

12. Assembly is now completed and the screen will be stable on a flat surface. (Fig.20)
13. After using the screen, disassemble and store it in the Aluminum storage boxes provided. To disassemble the screen, implement the assemble procedure in reverse order. (Fig. 21)

Safety Notice

- | | |
|---|---|
| Warning
Misuse of the screen may cause damage to the screen, or injury to persons. | Notice
The projection screen must be set up on a stable surface where there is sufficient space. Failure to do so may cause the screen to fall over causing damage to the screen and injury to persons. |
| Do not climb on the screen
Do not hang things from the screen or climb on it. Doing so may cause the screen to fall off and damage the screen and cause injury. | Warning
After using the projection screen Disassemble the screen and store it in the aluminum storage box provided. This will protect it from dust, dirt and accidental damages. |

Note: If the screen is faulty or is damaged in any way. Do not try to repair the projection screen yourself. Contact customer service to arrange it to be repaired.
The projection screen parts and specifications are subject to change without prior notice.

Content and accessories list: When unpacking the screen, check that all the parts from the appropriate list are there.

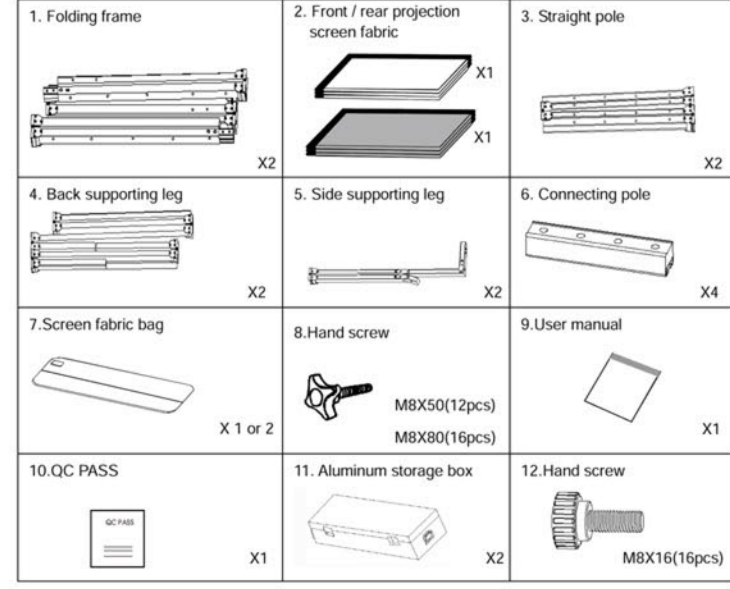
Use the parts as instructed by the user manual.

300" Easy Fold Screen Parts list

Part	Part number	Quantity	Unit
Folding frame	1	2	Pcs
Screen fabric	2	1/2	Pcs
Straight pole	3	2	Pcs
Back supporting leg	4	2	Pcs
Side supporting leg	5	2	Pcs
Connecting pole	6	4	Pcs
Screen fabric bag	7	1/2	Pcs
Hand screws M8X50	8	12	Pcs
Hand screws M8X80	8	16	Pcs
User manual	9	1	Pcs
QC PASS	10	1	Pcs
Aluminum storage box	11	2	Pcs
Hand screws M8X16	12	16	Pcs

Note: The part lists above are subject to change without prior notice.

Parts diagram



Note: The part diagrams above are subject to change without prior notice.

Assembly instructions

- (Fig.8)
- (Fig.9)
- (Fig.10)
- (Fig.11)
5. Take the screen fabric out of the screen fabric bag and put it inside the frame next to a corner. Unfold the fabric as shown in the diagram. (Fig.9-10)
6. Secure the screen fabric to the frame by snapping the buttons start from the corner ①, ② then ③, ④ (Shown in Fig.11-14) Make sure all the buttons must be snapped.

Assembly instructions

- (Fig.16)
- (Fig.17)
- (Fig.18)
- (Fig.19)
8. Position the back supporting legs onto the inner side of the straight pole. Use M8X50 screws to tighten it. The directivity can be indicated by the L/R label on the straight poles and the back support legs. (Fig.16)
9. Lay the frame on the floor and position the legs over both sides of the frame. Use M8X80 screws to tighten the frame and the back supporting legs. (With straight poles attached). (Fig.17)
10. Push the frame to up-standing position. [5 to 6 man-power for each side is strongly recommended (Fig.18)].
11. Attach the side supporting legs to the outer side of the straight pole and tighten it with M8X50 screws. (Fig.19)

Notice

Do Not

- Do not touch the projection area with hands
- Do not use chemical cleaning agents or alcohol to clean the projection area
- Do not write or draw on the projection area.
- Do not disassemble the screen when it is in use.

Correct

- Use a soft damp cloth or soft brush to clean the projection area.
- Use clean water and a soft damp cloth to clean the screen.
- After using the screen, disassemble the screen and store it in the aluminum storage box provided.

